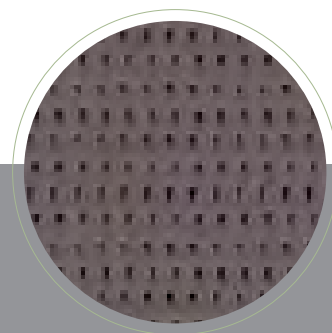
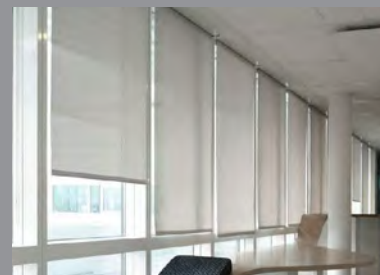


# SUNWORKER Y SUNWORKER METAL

Pieza/rollo de 30 m.l. Ancho estándar 3,00 mtr.



El tejido Sunworker es un tejido técnico que se emplea para la fabricación de toldos, velas, estores, etc.



Este tejido, no se recomienda para toldos de brazo extensible con salidas mayores de 2,25/2,50 metros ni para toldos de más de 4 o 4,50 metros de línea.

TOLDOS  
**Serrano**  
*TatamSport*  
**a trasluz**  
estores

[www.toldosserrano.com](http://www.toldosserrano.com)

FABRICA Y OFICINAS:

CRTA.CO GULLADA 40

50.014 ZARAGOZA - TLF.976 47 22 22

Email- [produccion@toldosserrano.com](mailto:produccion@toldosserrano.com)

ED. 16.02.16

# SUNWORKER

CARACTERISTICAS TECNICAS-TECHNICAL CHARACTERISTICS-CARACTERISTIQUES TECHNIQUES-TECHNISCHE DATE

Tejido-Fabric-Tissu-Gewebe.....100% polyester haute

Acabado-Finished.....Enduction PVC double face

Ancho-Width-Largueur-Breite

Sunworker y Sunworker Meta.....300 cm

Peso-Weight-Poids-Gewicht

Sunworker y Sunworker Meta.....320 gr/m2

Espesor-Thickness-Epaisseur-Dicke

Sunworker y Sunworker Meta.....0,40 mm

Resistencia desgarre-Tear strength-Resistance à la déchirure-Wleiterreissfestigkeit

Sunworker y Sunworker Meta.....En daN/5 cm DIN 53363.....Urd 43-Tr22

Resistencia tracción- Tensile strength- Résistance à la rupture- Höchstzugkraft

Sunworker y Sunworker Meta.....En daN/5 cm NF EN ISO 19934-1.....Urd 220-Tr150

Absorción acústica-sound absorption (Sunworker y Sunworker Metal.....NF ISO 354.....Clase E

Ignífugo-Fireproof-Epreuve du feu-Feuerfest.....DIN 4102.....M-1

.....C-1

Longitud de las piezas-Roll length-Longueur des pièces-Rollenlänge.....30/60 ml



Ref: Lona  
**LO1101** Código Art.  
LO1101 Ancho  
300 cm

-  
-  
-

BLANCO M005



Ref: Lona  
**LO1136** Código Art.  
LO1136 Ancho  
300 cm

-  
-  
-

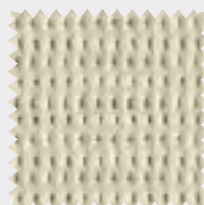
PEARL M006



Ref: Lona  
**LO1135** Código Art.  
LO1135 Ancho  
300 cm

-  
-  
-

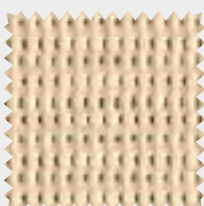
ELEPHANT M939



Ref: Lona  
**LO1115** Código Art.  
LO1115 Ancho  
300 cm

-  
-  
-

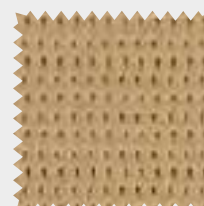
BEIGE M712



Ref: Lona  
**LO1110** Código Art.  
LO1110 Ancho  
300 cm

-  
-  
-

CHAMPAGNE M711

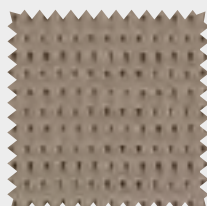


Ref: Lona  
**LO1132** Código Art.  
LO1132 Ancho  
300 cm

-  
-  
-

COOKIE M718

# SUNWORKER



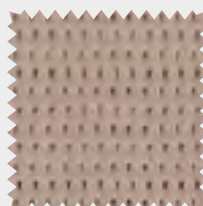
Ref: Lona  
**LO1134**

Código Art.  
LO1134

Ancho  
300 cm

-  
-  
-

TAUPE M719



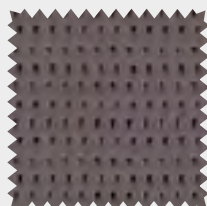
Ref: Lona  
**LO1133**

Código Art.  
LO1133

Ancho  
300 cm

-  
-  
-

CLAY M716



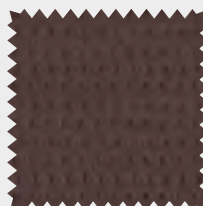
Ref: Lona  
**LO1139**

Código Art.  
LO1139

Ancho  
300 cm

-  
-  
-

BISON M715



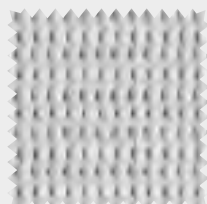
Ref: Lona  
**LO1138**

Código Art.  
LO1138

Ancho  
300 cm

-  
-  
-

TURF M717



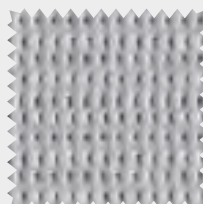
Ref: Lona  
**LO1102**

Código Art.  
LO1102

Ancho  
300 cm

-  
-  
-

GREY M654



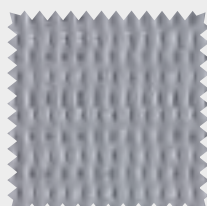
Ref: Lona  
**LO1116**

Código Art.  
LO1116

Ancho  
300 cm

-  
-  
-

IRON M653



Ref: Lona  
**LO1105**

Código Art.  
LO1105

Ancho  
300 cm

-  
-  
-

SILVER M652



Ref: Lona  
**LO1120**

Código Art.  
LO1120

Ancho  
300 cm

-  
-  
-

BRONZE M393



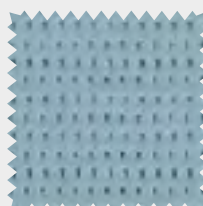
Ref: Lona  
**LO1121**

Código Art.  
LO1121

Ancho  
300 cm

-  
-  
-

BLACK M391



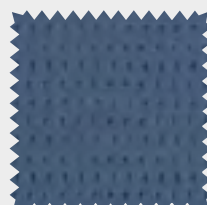
Ref: Lona  
**LO1140**

Código Art.  
LO1140

Ancho  
300 cm

-  
-  
-

FROST M721



Ref: Lona  
**LO1141**

Código Art.  
LO1141

Ancho  
300 cm

-  
-  
-

INDIGO M7224



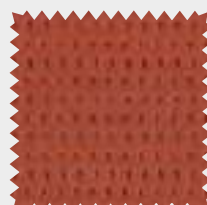
Ref: Lona  
**LO1119**

Código Art.  
LO1119

Ancho  
300 cm

-  
-  
-

CHARCOAL M392



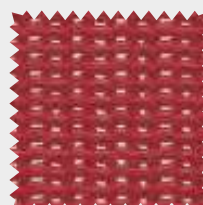
Ref: Lona  
**LO1137**

Código Art.  
LO1137

Ancho  
300 cm

-  
-  
-

TERRA M720



Ref: Lona  
**LO1117**

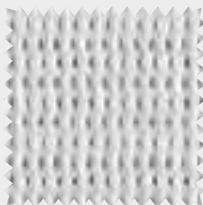
Código Art.  
LO1117

Ancho  
300 cm

-  
-  
-

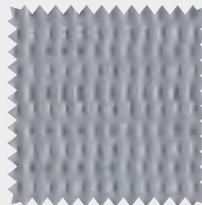
RED M927

# SUNWORKER METAL



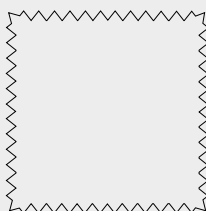
Ref: Lona	Código Art.	Ancho
LO1129	LO1129	300 cm
-	-	-
-	-	-
-	-	-

GREY M654

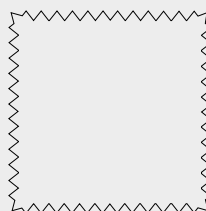


Ref: Lona	Código Art.	Ancho
LO1130	LO1130	300 cm
-	-	-
-	-	-
-	-	-

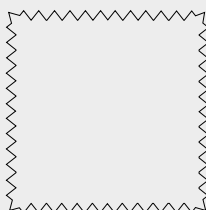
SILVER M652



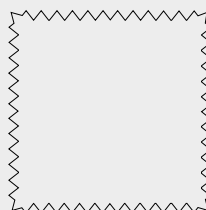
Ref: Lona	Código Art.	Ancho
-----------	-------------	-------



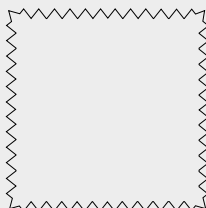
Ref: Lona	Código Art.	Ancho
-----------	-------------	-------



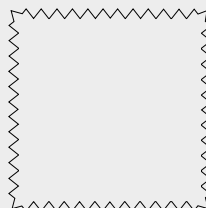
Ref: Lona	Código Art.	Ancho
-----------	-------------	-------



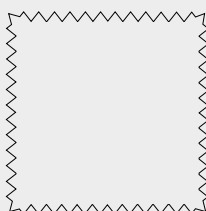
Ref: Lona	Código Art.	Ancho
-----------	-------------	-------



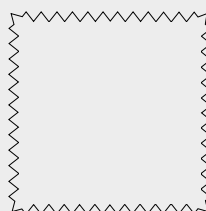
Ref: Lona	Código Art.	Ancho
-----------	-------------	-------



Ref: Lona	Código Art.	Ancho
-----------	-------------	-------

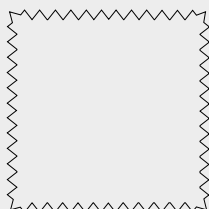


Ref: Lona	Código Art.	Ancho
-----------	-------------	-------



Ref: Lona	Código Art.	Ancho
-----------	-------------	-------

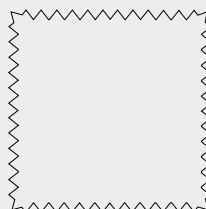
# SUNWORKER METAL



Ref: Lona

Código Art.

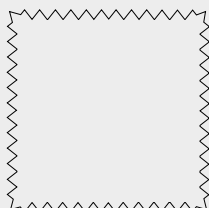
Ancho



Ref: Lona

Código Art.

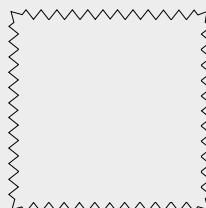
Ancho



Ref: Lona

Código Art.

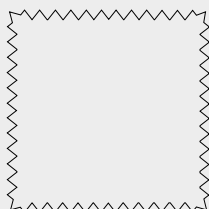
Ancho



Ref: Lona

Código Art.

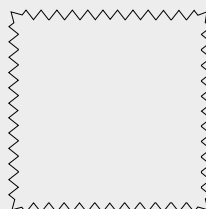
Ancho



Ref: Lona

Código Art.

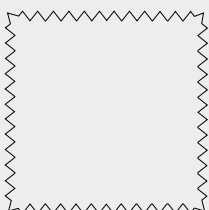
Ancho



Ref: Lona

Código Art.

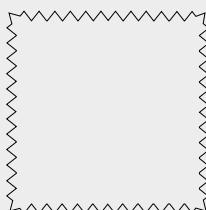
Ancho



Ref: Lona

Código Art.

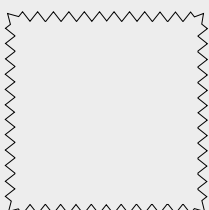
Ancho



Ref: Lona

Código Art.

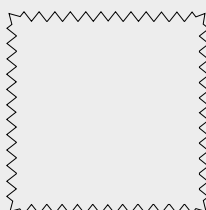
Ancho



Ref: Lona

Código Art.

Ancho



Ref: Lona

Código Art.

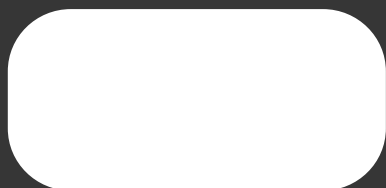
Ancho

TOLDOS  
**Serrano** 

***TatamSport*** 

**a trasluz**   
estores

SOLICITE SU OFERTA O CUALQUIER  
CONSULTA EN SU CENTRO MAS  
CERCANO DE DISTRIBUCION:



**TOLDOS SERRANO S.L**

EXPOSICION Y VENTA  
AVD.NAVARRA 41-43  
50.010 ZARAGOZA  
TLF.976 33 33 28  
Email.- [comercial@toldosserrano.com](mailto:comercial@toldosserrano.com)

FABRICA Y OFICINAS  
CRTA.COGULLADA 40  
50.014 ZARAGOZA  
TLF.976 47 22 22  
Email.- [produccion@toldosserrano.com](mailto:produccion@toldosserrano.com)